

ASSEMBLING

Working with concrete to offer reusable structures, is it utopian or feasible? The following proposal is the creation of concrete urban furniture. This is a shelter for public space. This urban equipment offers the possibility of being easily dismantled and reassembled without being damaged and without causing any waste. This reuse is possible thanks to mechanical assemblies, a simple structural framework and prefabricated concrete elements. All this allows for great variability in architectural proposals based on a few prefabricated concrete elements.

The reversibility of this proposal is possible thanks to an innovative mechanical assembly principle which offers the possibility of doing without concrete to embed the reinforcements. In fact, the assemblies are simply made using threaded rods embedded in concrete and nuts. A simple structural framework is implemented to avoid complex assemblies and junctions to be made. And finally, particular attention was paid to the design of the prefabricated concrete parts to have a great variability of implementation possible from a limited number of parts.

Implementation process

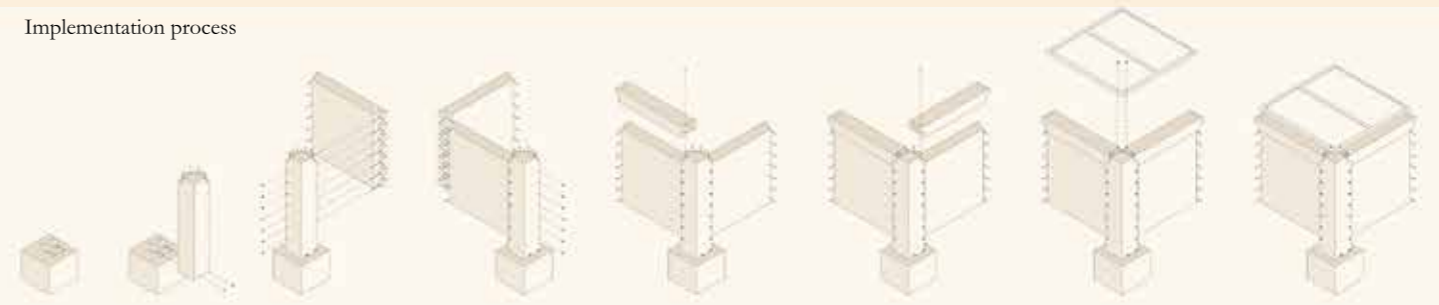
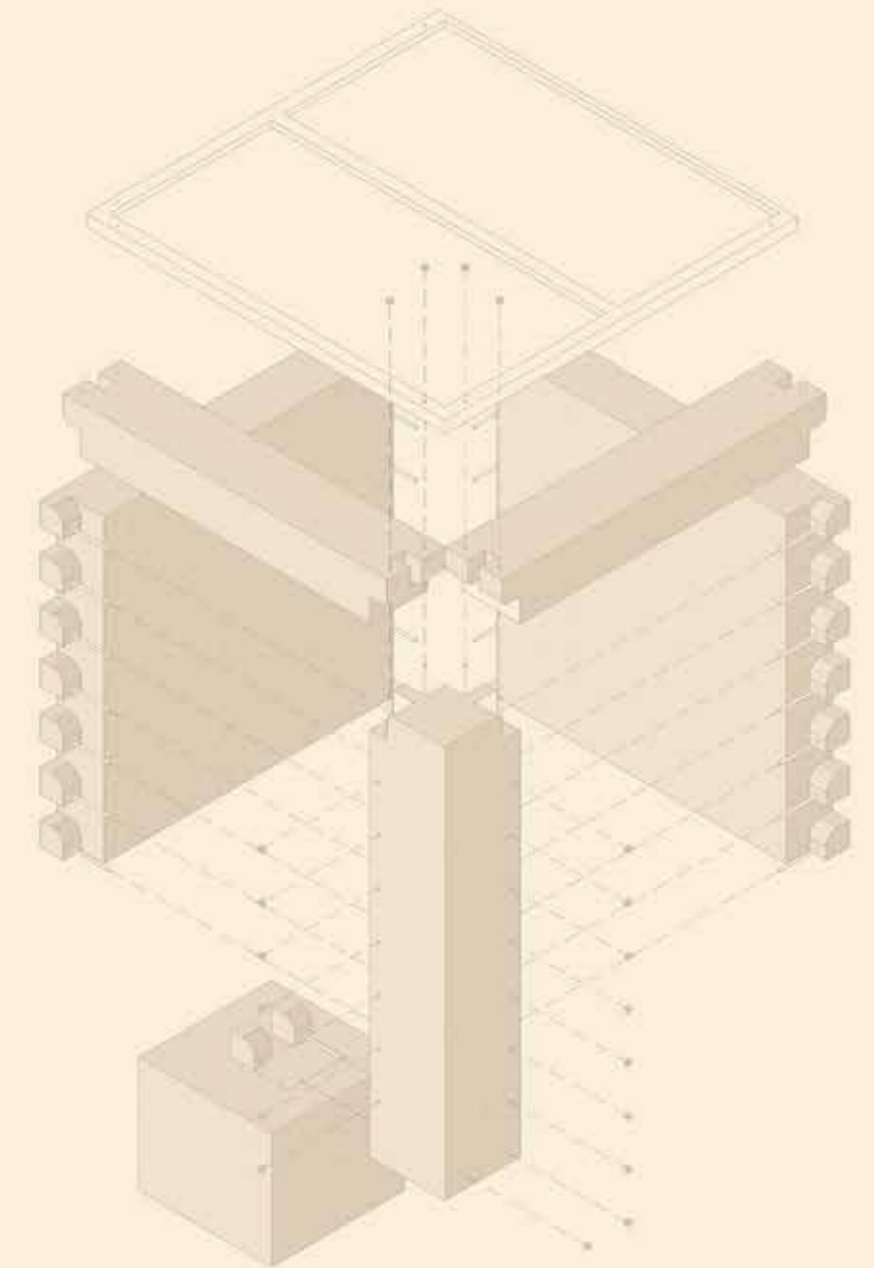
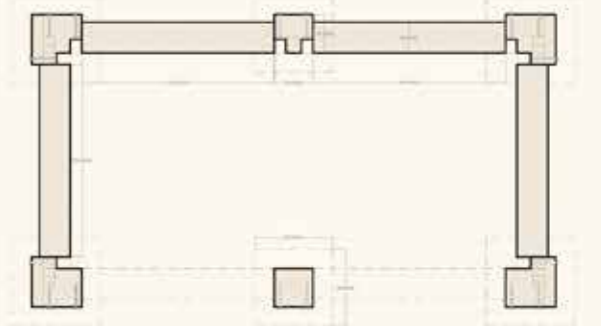


Table with typology

Columns		
Corner column which joins two frames with walls		2 elements necessary for the realization of this last shelter proposal.
Corner column which makes the junction between a frame with a wall and an empty frame		2 elements necessary for the realization of this last shelter proposal.
Corner column which joins two frames with walls		1 element necessary for the realization of this last shelter proposal.
Corner column which joins two empty frames		1 element necessary for the realization of this last shelter proposal.
Framing wall		
Wall which is assembled between two columns		4 elements necessary for the realization of this last shelter proposal.
Roofs		
Roof which is supported on two columns at its ends		6 elements necessary for the realization of this last shelter proposal.
Foundations		
Frame foundation on which the structure is placed		6 elements necessary for the realization of this last shelter proposal.
Glass covers		
Glass roof which serves as a cover for the structure and which is placed over the entire structure		1 element necessary for the realization of this last shelter proposal.
Fitting elements		
Stap used to fix the different elements together		02 elements necessary for the realization of this last shelter proposal.



Section



Plan