

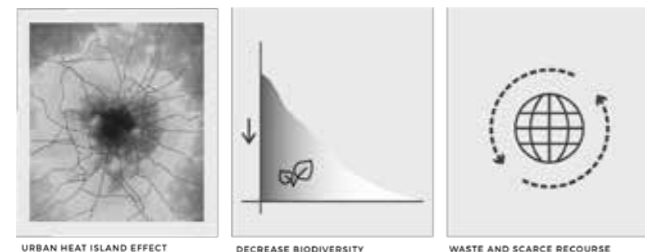
# HYDROWALL

HydroWall introduces facade elements that collect and store rainwater. Due to the layered structure which is closed on the rear and opens up towards the street, the water is slowly dispersed and evaporated during dry periods. The shell facing the street is designed with slanted openings to gather water and slowly filter it into the center hydrocrete layer. This open concrete structure consists of hydroballs which are held together by concrete, creating a mixture that absorbs water and lets the access flow deeper into the panel. Through this process of storing and slowly releasing rainwater, the facade will have a cooling effect

while also providing a place for plants and mosses to flourish, increasing the biodiversity and air quality of its surroundings.

The HydroWall panels are prefab elements that can be easily mounted on the load bearing structure. There are two sizes available, depending on whether the project is residential or an office building. By changing the size of the openings in the panels, differing patterns can be created. The standard panel offers a vertical transition as can be seen below, but upon request there are other patterns possible.

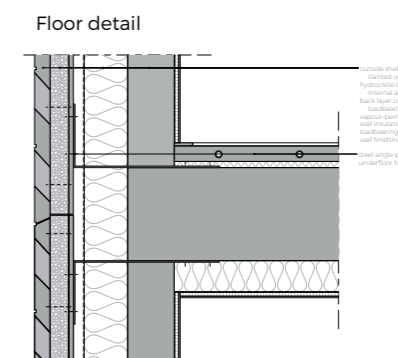
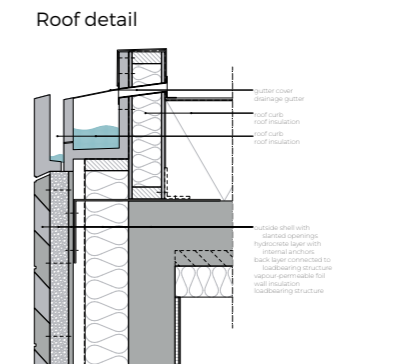
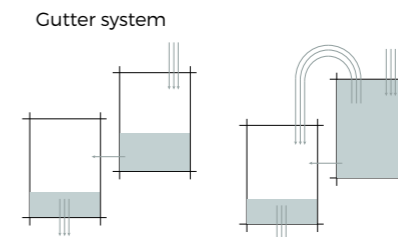
### Problem



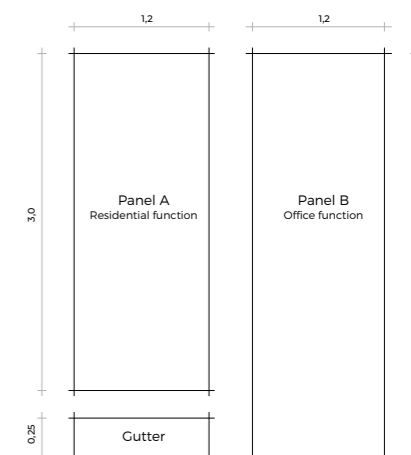
### Solution



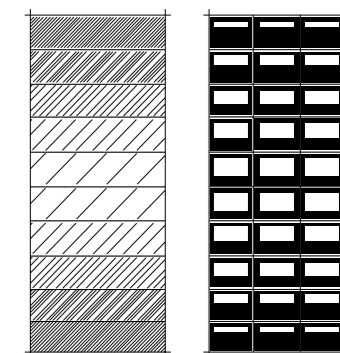
Concept axonometry



### Standard measurements



### Design concept



### Casting process - prototype

